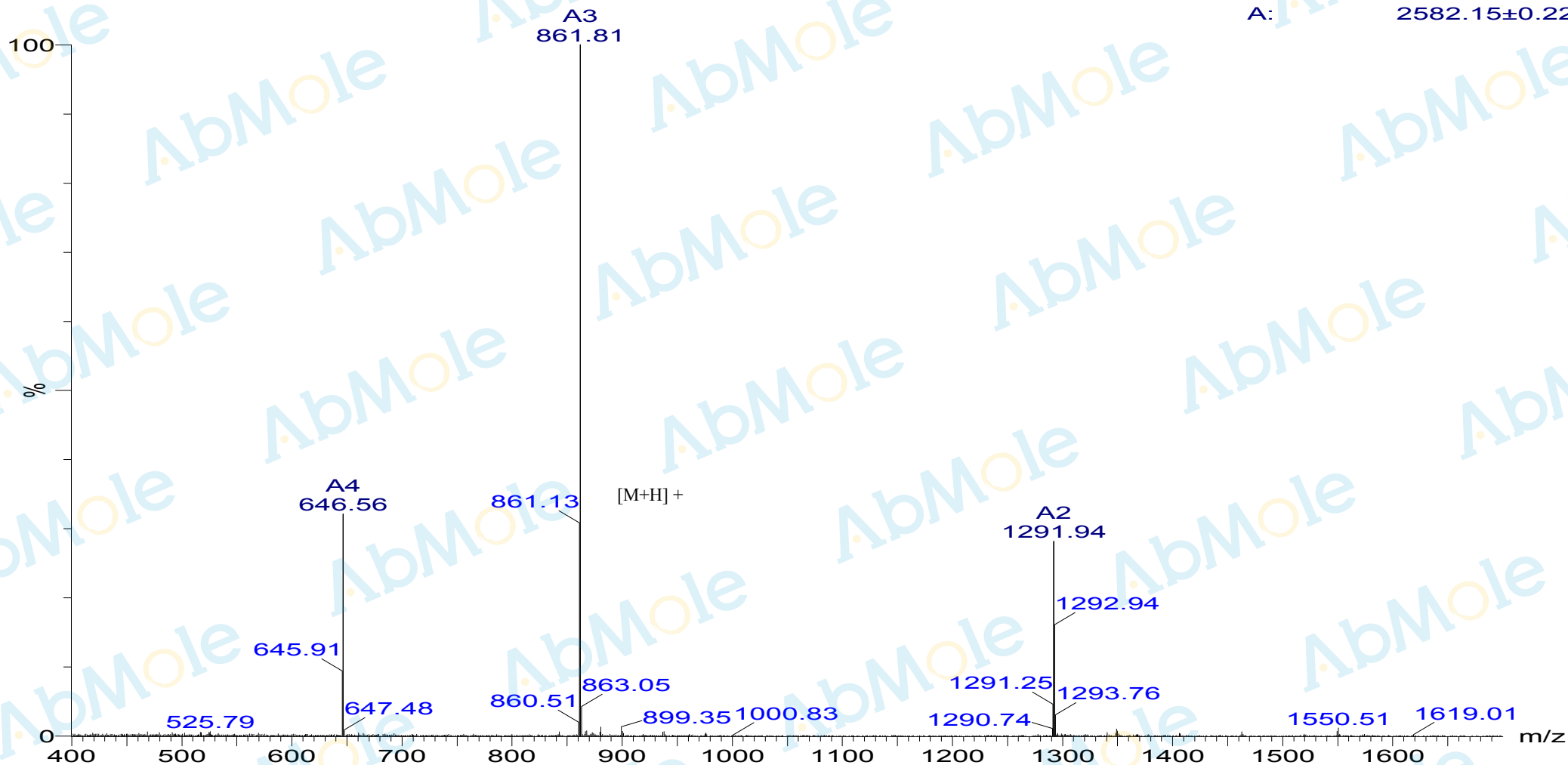


# MASS SPECTROMETRY REPORT

A: 2582.15±0.22



## Sample Description

Analyzed date: 2022-07-12  
Analyst: SHAO  
Sample: M10195-MOG (35-55)-01  
M.W.: 2582.0  
Lot. No.:

## Instrument

Probe:  
Nebulizer Gas Flow: 1.5L/min  
CDL: -20.0v  
CDL Temp.: 250 °C  
Block Temp.: 200 °C

## SHIMADZU LCMS-2020

Probe Bias: +4.5kv  
Detector: 1.5kv  
T. Flow: 0.2ml/min  
B. Conc.: 50%H2O/50%ACN